



Competitive Funds of the PhD Study

The most successful students may compete for the support of Competitive Funds of PhD Study and get:

- Partial reduction or full coverage of tuition fees
- Support for participation at the international conference
- Financing of innovative experiments within the scope of PhD thesis
- Support for mobility in the research institution abroad.



Information



**University of Zagreb
Faculty of Mechanical Engineering
and Naval Architecture**

I. Lučića 5, HR-10000 Zagreb, Croatia
P +385 16168 167
F +385 16156 940
E doktorski@fsb.hr
doktorski.fsb.hr

**University of Zagreb
Faculty of Metallurgy**

Aleja narodnih heroja 3
HR-44103 Sisak, Croatia

Postgraduate PhD (Doctoral) Study

MECHANICAL ENGINEERING
NAVAL ARCHITECTURE
AERONAUTICAL ENGINEERING
METALLURGICAL ENGINEERING



University of Zagreb
Faculty of Mechanical Engineering
and Naval Architecture

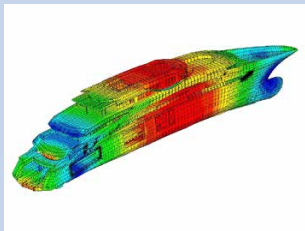


SVEUČILIŠTE U ZAGREBU
METALURŠKI FAKULTET

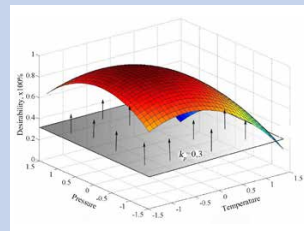
UNIVERSITY OF ZAGREB
FACULTY OF METALLURGY



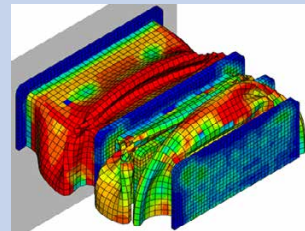
Modules of the PhD Study
 Mechanical Engineering, Naval Architecture, Aeronautical Engineering, Metallurgical Engineering



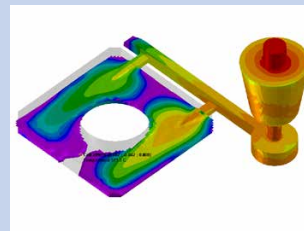
Naval Architecture and Ocean Engineering



Industrial Engineering and Management



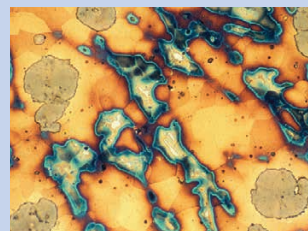
Computational Mechanics



Advanced Production Technologies



Process and Energy Engineering



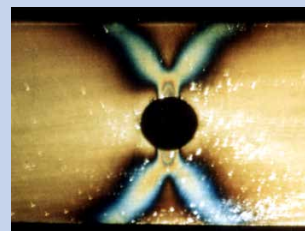
Materials Engineering



Metallurgical Engineering



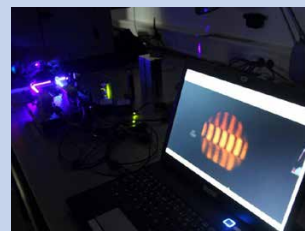
Mechatronics and Robotics



Theory of Structures



Aeronautical Engineering



Scientific Metrology in Mechanical Engineering



Main features of PhD Study Mechanical Engineering, Naval Architecture, Aeronautical Engineering, Metallurgical Engineering

- Research and innovation in the focus of the doctoral study
- Participation of invited lecturers from the industry and from abroad
- Minimum number of courses (only 6 courses in total, among them 5 elective courses)
- Encouragement of the international cooperation and mobility of PhD students
- Stimulation of the work on research projects and cooperation with the industry
- Full time PhD study with duration of 3 years
- Part time PhD study with duration of 5 years for PhD students from the industry
- Possibility of the support from the Competitive Funds of PhD Study